

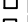
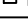
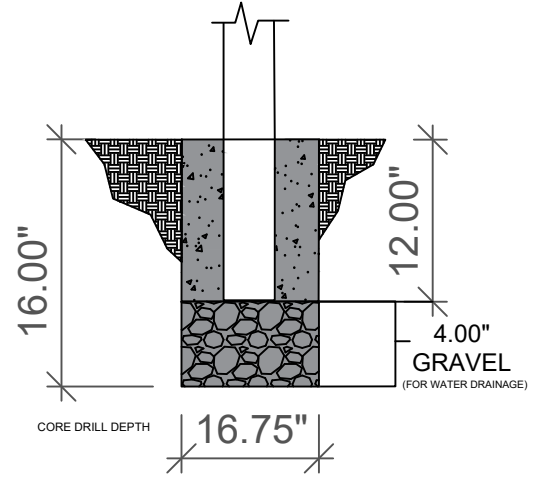
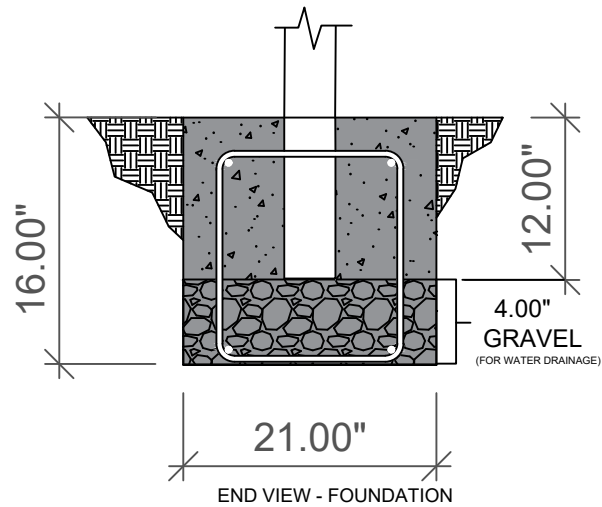
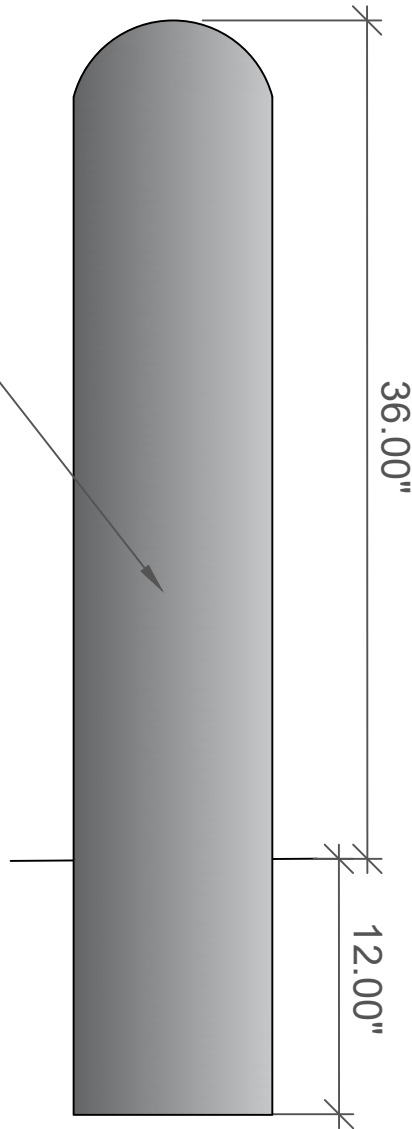


1-800-BOLLARDS

The Bollard Experts

- SELECT DESIRED MATERIAL:
(10" NOMINAL SIZE)
 - FSS10000 SCH 10 STAINLESS STEEL
 - FSS10040 SCH 40 STAINLESS STEEL
 - FSS10080 SCH 80 STAINLESS STEEL
 - FCS10040 SCH 40 ASTM A-53 CARBON STEEL
 - FCS10080 SCH 80 ASTM A-53 CARBON STEEL
- SELECT DESIRED STAINLESS STEEL BOLLARD FINISH:
 - POLISHED #4 FINISH
 - AS SPECIFIED _____
- SELECT DESIRED CARBON STEEL BOLLARD FINISH:
 - POWDERCOAT RAL # _____
 - AS SPECIFIED _____
- SELECT DESIRED STAINLESS STEEL BOLLARD MATERIAL:
 - TYPE 304
 - TYPE 316
- SELECT DESIRED BOLLARD CAP STYLE:
 -  DOME (SHOWN)
 -  STANDARD FLAT
 -  REVEAL
 -  SLOPED

Fixed Bollard



DOME (SHOWN) STANDARD FLAT REVEAL SLOPED



REVISIONS			
LTR	DESCRIPTION	DATE	APPVD

COMMENTS

SPECIFICATIONS

HEIGHT: 36"
DIAMETER: 10.75"
WALL THICKNESS: 0.280" SCHED 40

APPLICATION		NEXT ASSY	USED ON	1-800-BOLLARDS, Inc. 10 Hughes Suite A105 Irvine, CA 92618 PHONE: 1-800-BOLLARDS WEB: WWW.1800BOLLARDS.COM EMAIL: INFO@1800BOLLARDS.COM	TITLE BOLLARD, FIXED

1. REVISIONS TO BE COMPLETED IN ACCORDANCE WITH MANUFACTURER'S SPECIFICATIONS.
2. DO NOT SCALE DRAWING.
3. FOR GENERAL INFORMATION ONLY. FOR USE BY ARCHITECTS, ENGINEERS, CONTRACTORS, CONSULTANTS AND DESIGN PROFESSIONALS FOR PLANNING PURPOSES ONLY. THIS DRAWING MAY NOT BE USED FOR CONSTRUCTION.
4. ALL INFORMATION CONTAINED HEREIN WAS CURRENT AT THE TIME OF DEVELOPMENT BUT MUST BE REVIEWED AND APPROVED BY THE PRODUCT MANUFACTURER TO BE CONSIDERED ACCURATE.
5. CONTRACTOR'S NOTE FOR PRODUCT AND COMPANY INFORMATION VISIT WWW.CADWORLD.COM/180 AND ENTER REFERENCE NUMBER SHOWN.